

THE CHARLOTTE SAWDUST

The Official Journal of
The Charlotte Woodworker's Association

www.charlottewoodworkers.org

Editorial

Well here goes. This will be a new experience for me as I have never been the editor of a newsletter before. I can't say that I was elected to this office by popular vote because hardly anyone in the club knows who I am. I am a new member as of this past summer.

I stood there, during the November meeting, as Wayne was asking for a volunteer for the office, hoping that someone would hurry up and volunteer so we could go ahead with the demonstration.

As the obvious lack of enthusiasm was not getting any offers for help, I started thinking that the reason I joined the club was to learn more about woodworking from a lot of people that have more experience than me. What better way to learn and get more out of the club than by getting involved. So I volunteered.

I hope I won't disappoint you this year but I am already learning and I would hope all of you would take an active part in our organization. I could use a lot of ideas on how to make this newsletter interesting and informative, and I am sure Dick Thomas, our VP, who heads a committee to get speakers and demonstrations, could use any suggestions and help.

I look forward to a great 2004 and hope you have one as well.

Sincerely,

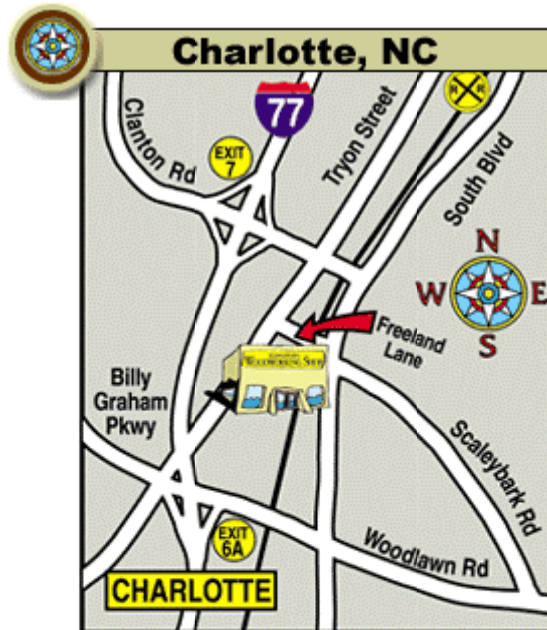
Mike Dyer
mdyer@adwarchitects.com
(704) 379-1919 days
(704) 814-9580 evenings

January Program

Our program for January will be conducted by a Klingspor Representative on sandpaper, its selection and its use.

Meeting Time

Meetings of the Charlotte Woodworker's Association are held the third Monday of each month, except for December. Meetings are typically held at THE WOODWORKING SHOP of Charlotte, 116M Freeland Lane, Charlotte, NC. Exceptions will be announced well in advance. If you need directions to the shop, visit their web site at <http://www.woodworkingshop.com> and click on the link to "Store Locations".



**116 M Freeland Lane
(Queen Park Business Center)
Charlotte, NC 28217
(704) 521-8886**

Get Directions:

MAPQUEST

Following a social and refreshment time that starts at 5:30pm, our meetings start at 6:00pm. Get to the meeting early and get to know your fellow woodworking enthusiasts. Please refrain from placing food, drinks and trash on worktables and shelves around The Woodworking Shop.

Membership Dues

Membership dues should be paid at the January Meeting. Checks are preferable so that we will credit them properly. Jaye Peterman will be collecting them and giving you a receipt. Please keep this receipt so that you can prove that you have paid if it comes into question. If you can't attend the January meeting, please mail a check for \$25 made out to Charlotte Woodworkers Association to Mr. Jaye Peterman, Secretary CWA, 3828 Selwyn Ave., Charlotte, NC, 28209 prior to the end of January.

Anyone joining CWA during the year will pay under the new structure as follows:

Join Jan-Apr = \$30

Join May-Aug = \$20

Join Sep – December = \$35 (included the following years \$25 renewal)

These prices are for new members only, renewing members fee is still \$25 at all times

\$\$\$ Save Money at the Woodworking Shop \$\$\$

As a member of the Charlotte Woodworkers Association you can save 10% off all your purchases from The Woodworking Shop, excluding wood and power tools. Thanks to our hosts at the Woodworking Shop for allowing us to have our monthly meetings and extending 10% off to CWA members.

Email Option for SAWDUST – PLEASE HELP !!

If you don't already receive THE SAWDUST by email, please consider this option. By receiving the newsletter by email you 1) save the organization money, 2) receive color pictures, and finally 3) get quicker delivery. Sign up today for the email option by sending an email to secretary@charlottewoodworkers.org and your delivery method will be changed immediately.

CWA Mentor Program

The following members have offered their help to anyone interested in learning skills or new techniques in their area of interest. Contact each person to arrange times to get together if interested.

Name	Area of Interest	Phone	Email
Wayne Cooper	***	704.409.1417	cooper@arconmfg.com
Bill Golden	Shopsmith & Accessories	704.525.9691	popstoystore@juno.com
Dwight Hartsell	Woodturning	704.598.6029	woodwright@aol.com
Jeff Jacobs	any woodworking	704.309.1263	jacobj@meckco.com
Wayne Manahan	Sharpening	704.786.0768	wmanahan@vnet.net
Gil Milsaps	Windsor chairs	704.875.0758	gad32about@aol.com
Alvin Tench	any woodworking	704.824.7717	alvintench@netzero.com

*** Wayne Cooper has a fairly complete shop and would actually like an experienced woodworker to use it and teach him how to use it properly in exchange for use of the shop. If you are interested in helping Mr. Cooper please contact him directly to make appropriate arrangements.

Write an article for Sawdust

Please consider writing an article for The Sawdust; this is your newsletter what do you want from it? What do you want to share with your fellow woodworkers? Everyone likes to share, share your successes, failures, mistakes, have fun with it and share with others at the same time!. Contact Mike Dyer @ secretary@charlottewoodworkers.org or call (704) 379-1919 days or (704) 814-9580 evenings.

Woodworking Show – Charlotte - March 12 – 14, 2004

Merchandise Mart – Liberty Hall
2500 East Independence Blvd

Admission: \$8.00 Adults which is good for all three days (cash only)
Go to their web Site for a coupon for \$1.00 off or
Free spouse admission

The club is planning on having a booth at the show and will need volunteers to staff the booth and bring samples of their work for display. Contact Wayne Manahan at pres@charlottewoodworkers.org or call (704) 786-0768.

Christmas Party

The Christmas party was a lot of fun and a big success. Almost 40 members and spouses came to the Country Inn in Matthews for an excellent buffet dinner and fellowship. We enjoyed it enough to reserve the room for next year.

A raffle was held for member-made gifts, which were greatly appreciated. It's always nice when we have enough gifts for each guest to receive something, so start thinking about what you'd like to make for a gift today. That gives you 11 months to actually make it!!!

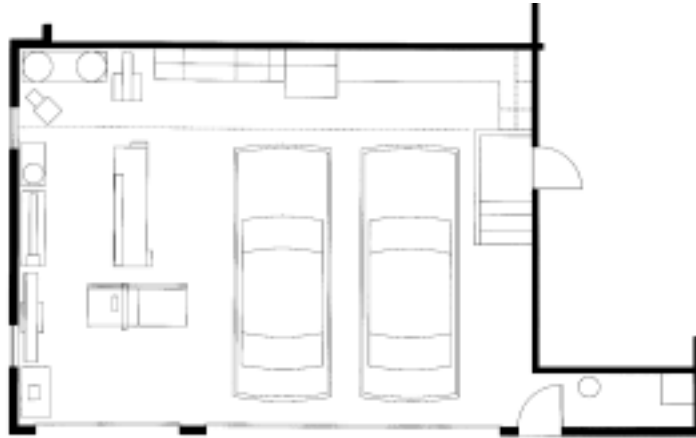


Shop Talk

As I was thinking of ideas for the newsletter, it occurred to me that it would be interesting to see what the members have done with their own workshops to better utilize space. Most members don't have the luxury of large buildings to house their precious possessions so they have to improvise to make the best of their situations. I would hope you would share with the other members some of your ideas through photos. Just email or call me so we can all see what you have done in your shop. My contact information is on page 1.

To start what I hope will become a series of articles, I will share with you some shots from my own shop.

I am fortunate to have a bay of a three-car garage but had to promise my wife that we would be able to park our cars in the other two bays. To accomplish this, I have put all of my machines on wheels with the exception of my workbench. My garage is deep enough that I was able to mount cabinets along the entire back wall for storage and additional work surfaces.



When the cars are moved out, I can roll my machines into the center of the garage. I connect my dust collector to the machine with a long flexible hose and the power is overhead through two cord reels (one for 120 volts and one for 240 volts).



I framed overhead lumber storage above 8 feet so that I could utilize all of my space.

Even my clamps and scrap wood are on wheels to save every square foot.



These removable bins were purchased from a Space Savers Store and are great for nails, screws, etc.



Classified Section

\$\$ For Sale \$\$

Approximately 1000 board feet of 1 inch thick Oak – various widths from 6” to 10”, the boards are about 12 feet long. Asking \$1/bf with a 100 bf minimum, would like to see all 1000 bf for \$900. Contact Mike Patterson @ 704.435.5179.

8” Inca Tilt Table Saw (\$295), Makita 9820-2 Electric Sharpener (\$150) and a Makita 9045N ½ Sheet finish sander (\$50) are available from George Fryling at 704.752.0121 or George@fryling.com.

For Free \$0

Jenny Kearney has three standing dead sourwood trees near her house in South Charlotte that she's willing to give to anyone who would be willing to take them down and haul them away. Jenny can be contacted at Jenny.V.Kearney@bankofamerica.com.

Membership 2004

Members are the lifeblood of any organization, and ours is no different. We need new members who are willing to participate in CWA events, work on projects for the betterment of our woodworking organization and take a turn at the responsibility of being a club officer. Let's make 2004 a year of recruitment, a year that our membership grows. Let's go all out to attract new people who are excited about being part of a group that is actually doing something for the benefit of woodworkers in the Charlotte area. With their help, we can make this organization more valuable to our members.

Things to Do in 2004

We need volunteers to get the speakers working again. It was suggested that a wireless microphone might be the way to go. If you're willing to drive this effort to completion, please let me know and we can get started making our meetings more friendly to people who have trouble hearing... Wayne L. Manahan, President (my contact information is on the last page)

Proposals Wanted

Please think about what we could do to make our organization more useful to the membership. Be prepared to help implement your idea, and bring it to the attention of one of the CWA officers. The only way that we can make things better is to take an active role in defining and implementing improvements to the way things currently are. Don't count on others to make the investment of thought, time, and commitment that are needed to make membership in this organization more worthwhile. Each of us has something valuable to offer, and if we're willing we can make a positive contribution to the organization.

Have you ever thought of interviewing founding members on videotape?

Building a project to teach new woodworkers some basic (or advanced) woodworking technique?

Talking about woodworking to a group of interested young people?

Have you thought about building a project that will make our meetings function more efficiently?

The list is endless. Part of it is within you. Make it happen! Wayne L. Manahan, President

H & S Lumber

Mr. Robert Boland, Manager
4115 Monroe Road
Charlotte, NC 28205
704.333.3130 (sponsor)

The Woodworking Shop of Charlotte

Mr. David Owens, Manager
116M Freeland Lane
Charlotte, NC 28217
704.521.8886 (contributing/sponsor – except power tools and wood)

Harbor Freight USA

Mr. Martin Treadwell, Manager
3852 E. Independence Blvd.
Charlotte, NC 28205
704.569.0182 (contributor)

Show your CWA membership card at any of the listed places and receive benefits (except for Woodcraft and Harbor Freight USA, which are not able to provide sponsorship in the form of discounts).

Woodcraft

Mr. David Boyuka
1725 Windsor Square Drive
Matthews, NC 28105
704.847.8300 (contributing)

2004 CWA Officers

President	Wayne L. Manahan pres@charlottewoodworkers.org	(704) 786-0768
Vice President	Dick Thomas vp@charlottewoodworkers.org	(704) 332-3418
Treasurer	Jaye Peterman treasurer@charlottewoodworkers.org	(704) 527-8768
Secretary	Michael L. Dyer secretary@charlottewoodworkers.org	(704) 379-1919

The Charlotte Woodworkers Association
Mike Dyer, Editor
11342 Colonial Country Lane
Charlotte, NC 28277
secretary@charlottewoodworkers.org

Next Meeting:
January 19, 2004
At The Woodworking Shop
