

# THE SAWDUST

NEWSLETTER OF THE CHARLOTTE WOODWORKERS ASSOCIATION

Volume 17, Issue 11

November 2010

## Newsletter

If anyone would like to contribute articles, information or provide suggestions for the newsletter, please send them to me. We need to make this a group effort.

Thanks also to Peter Stoffel, who assists with note taking at the meetings, and to Mike Smith for the photos he provides : - much appreciated.

Roger Callahan ([roger\\_callahan@bellsouth.net](mailto:roger_callahan@bellsouth.net)) - Secretary



## "One Special Christmas" Charity Auction December 2

The "One Special Christmas" dinner/auction will be held on December 2nd at Oehler's BBQ Barn. Reservations are required. Call 704-663-5010 by November 24. Members are encouraged to consider making a project to donate to this auction and CWA bylaws suggest support of a minimum one charitable organization per year.

See <http://www.onespecialchristmas.com> for more details.

÷

## CWA Christmas and Year End Dinner December 14

We'll be eating at Elliot's BBQ (<http://www.elliotsbbq.com/>) in Matthews next to the Woodcraft Store. Gather for a 6:30 dinner.

The menu will consist of smoked pork, chicken and BBQ ribs. We'll have mac'n cheese, baked beans and slaw for sides and brownies and banana pudding for desserts. Tea, coffee and soda will be available in the banquet room as well. Elliot's serves beer and wine, however if you would like to enjoy an alcoholic drink you'll need to go through the line and purchase that on your own. The fee for dinner is \$10 per person.

If you have not already informed Kurt Stubenhofer that you plan to attend You can email Kurt at [kurstuben@gmail.com](mailto:kurstuben@gmail.com).

P.S. **Reminder:** Bring an item for the gift exchange for guests and spouses.



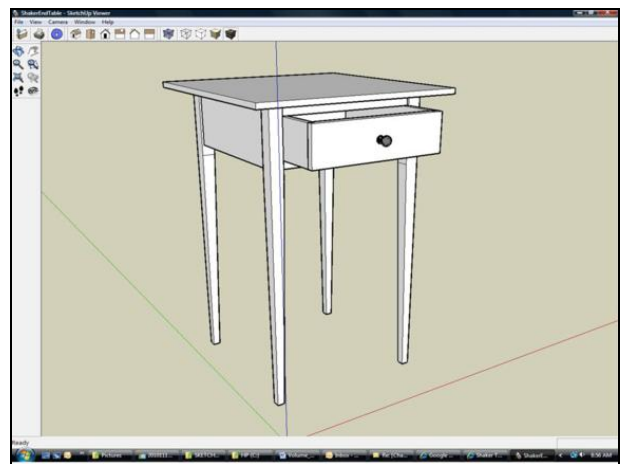
## Using SketchUp

At the November CWA meeting, Mike Dwyer did a presentation on the Google SketchUp software program. This software permits you to do 3D modeling (i.e. drawing in 3-dimensions) on your computer. Mike described how to download the software to your computer and built an example table design using the program.

There is a free version, which is Google SketchUp, and a Google SketchUp Pro Version available for \$95.00 for a single license fee. These are available at <http://sketchup.google.com/index.html> along with descriptions and educational material.

CWA library has bought two CD's from Popular Woodworking. These have excellent information and can be copied to your computer for use while you are using the SketchUp program. The first is "SketchUp for Woodworkers Part 1: Getting Started" and the second one is "SketchUp for Woodworkers Part 2: Advanced Techniques"

Videos can be found on Google and YouTube referenced to SketchUp, which can provide additional instructions for using the program.



(Editor's Note: This [SketchUp model](#) of a Shaker table was built by editor Christopher Schwarz as the cover project for issue 2 of Woodworking Magazine, and the SketchUp model is by illustrator Louis Bois.)

(cont'd on page 2)

## CALENDAR OF EVENTS

December 2: **"ONE SPECIAL CHRISTMAS" AUCTION AND DINNER** - see [www.onespecialchristmas.com](http://www.onespecialchristmas.com) for details.

December 14: **CWA CHRISTMAS AND YEAR END DINNER** - 6:30pm at Elliot's Barbecue in Matthews (see page 1 for details)

\*\* No regular third Tuesday CWA meeting in December: **CHARLOTTE WOODWORKERS ASSOCIATION MEETING**. (Dec. 14th dinner replaces the December regular meeting.)

January 18: **CHARLOTTE WOODWORKERS ASSOCIATION MEETING** - 6:30pm : \*\* Bring 'show and tell' - recent projects, items, etc. to share with members.

### WOODCRAFT STORE IN CHARLOTTE UPCOMING CLASSES:

There is an extensive list of classes; too numerous to list.

See: Woodcraft of Charlotte Website:

<http://www.woodcraft.com/stores/store.aspx?id=507&page=classes>



### Treasurer's Report: as of 10/30/10

Opening balance	1830.58
Deposits	234.00
Checks	0.00
Closing balance	2064.58



## Using SketchUp

(continued from page 1)

Google has a library of SketchUp files that are available for download in their "3D Warehouse":

see: <http://sketchup.google.com/3dwarehouse/> .

If you enter woodworking in the 'search' field, more than 1600 models of projects done in SketchUp related to woodworking can be reviewed and downloaded.

Thank you Mike for a very informative presentation and information.



## 2011 CWA Officers and Incorporation

At the November meeting the following CWA officers were elected to serve for calendar year 2011.

President – Mike Smith  
Vice- President – Dave Powles  
Secretary – Roger Callahan  
Treasurer – Fred Smith

Also for 2011, CWA has submitted paperwork to have the club incorporated as a non-profit corporation in NC. The by-laws will be updated and a board of directors formed, which is required along with various other NC corporation requirements that will occur.

One immediate by-law change and approved at the November CWA meeting addressed dissolution, if ever required. The bylaws will specify CWA assets must go to another entity with similar goals.

Contact a CWA officer, if you have some suggested changes to the bylaws, as the plan is to develop all the necessary changes at one time. Expect to hear some additional information at the January meeting as the incorporation changes are finalized.



## SHOW & TELL

During the 'Show & Tell' section of the November meeting several members displayed and briefly described some of their recent work.

- ❖ Two examples of dulcimers being made as a CWA project being lead by Mark Willingham. (Tony Profera's on the left and Mark's on the right.)



- ❖ A hanging shelf and storage by Mike Smith, which he will be donating to the One Special Christmas Auction.



- ❖ A woven cane seat stool created by Bruce Bogust.



- ❖ Fred Miller's dovetailing work he is perfecting.



*(continued on page 3)*

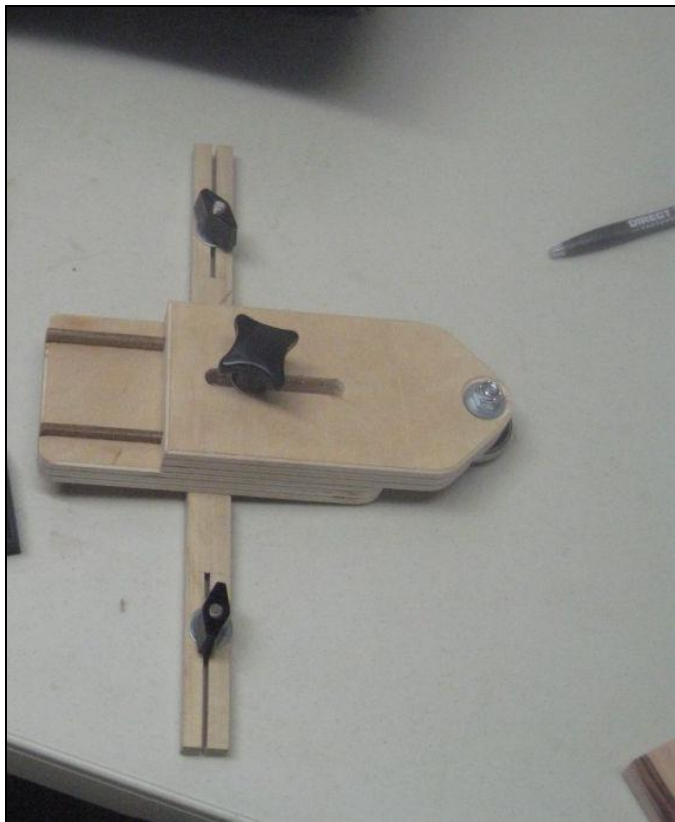
## SHOW & TELL

(continued)

- ❖ Mike Pleso turned some new handles for a router base he had purchased that was missing handles.



- ❖ Pete Stoffel made this jig for making thin strips of wood on a table saw.



- ❖ Bob Fields built this bench for the One Special Christmas Auction.

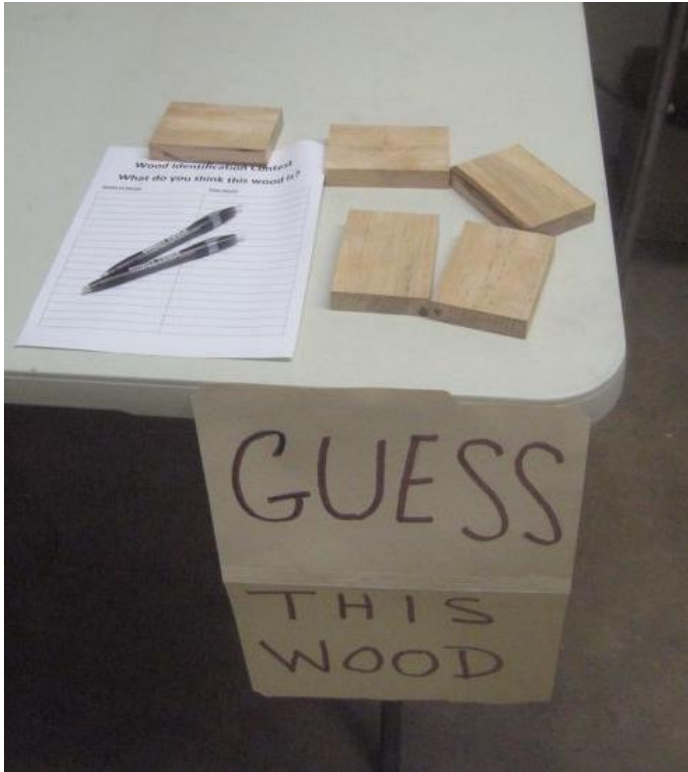


- ❖ Bill Golden showed us what can happen when you believe "I can take just a little more off." When making a perfume bottle holder, he went just a little too far !! Thanks for sharing Bill.



## Other Items from the Woodpile

**Guess the Wood:** Mike Smith will be sponsoring a "Guess the Wood" contest at each monthly meeting and awarding a prize to the successful entry.



--

## Club embroidery items - shirts, hats, etc.

CWA is planning to have some "Club logo embroidery items" available to offer the members. Look for more details here in the future.

--

./s

## CWA Google Groups

**There is a new method for CWA membership to communicate!**

With a single email we can let you know what's happening. You can also view all the 2009 published club newsletters.

**Note: You Can Join This Group on Your Own!**

To join:

Paste the entire line below in your web browser's address bar

<http://groups.google.com/group/charlotte-woodworkers>

- Hit "enter", Click the link "Join this Group" (on the right).
- Create a Google account if necessary (all they want is an email address and password). Please save your password in a secure place for future use.
- Once "signed in" select the radio button "Email" at the bottom and enter a nickname.
- Send an email out to the group to introduce yourself!
- Use "charlotte-woodworkers@googlegroups.com" as the "send to" in any email communication to all members of the group.

./s

## Best Quote of Last Few Months

"I like to start slow and then taper off."

*Mike Smith*

## Boy Scouts of America

### *Woodworking Merit Badge:*

Scouts working on some merit badges are at JPM working projects on Monday evenings.

### *Explorers Post:*

We have had keen interest from area Scouts. An Explorer Post (A co-ed teenage division of Boy Scouts for 14 - 21 year olds) has been exploring a variety of areas of wood working in the broadest sense including framing, cabinet making, furniture making, wood turning, etc. They' meet at JPM generally meet once a month on the 3rd Saturday of the month.

Post members that want to also join CWA get a student membership rate of \$15/ year.



## JPM Shop Use

Any current CWA member who would like to use the shop is welcome to do so! All that is needed is to schedule the time! If you have something specific you need to do and you need our tools or a bigger shop to work in, please do so!

To use the shop contact Jim Emery at:

[JimE@JacksonPark.Org](mailto:JimE@JacksonPark.Org).



**The CWA meeting raffle** could benefit from your donation. If you have any tools (old or new) or shop supplies you would like to donate to be raffled, please bring them to the meeting and let Mike Smith know.



## SHOP TOURS

Mike Smith organizes club membership shop tours. The goal is to have shop tours scheduled that are in the same general geographic area to reduce the distances traveled between shops and permit time to adequately tour several shops in a day.

Please sign up even if you don't have a fancy shop

If you would like to put your shop on the shop tour list, please contact Mike at:  
[mikececilsmith@carolina.rr.com](mailto:mikececilsmith@carolina.rr.com)

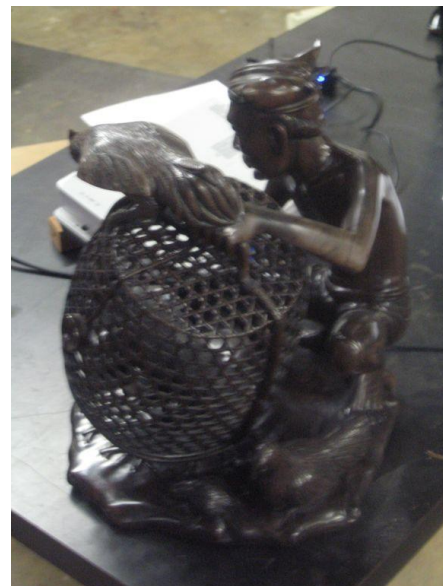
Note: all shop tours are for active CWA members only. Please refrain from bringing guests, family members, friends, dogs etc...

Once enough shops are committed a date will be set.



## Beautiful Carving:

This is a carving that Mike Dyer brought in for members to see. He did not do this carving but acquired it. It is made of ebony and the entire carving was carved out of one piece of ebony.



## CWA MEETING PRESENTERS

All members are asked to keep an eye out for anyone that might make be a suitable program presenter for our CWA club meetings. Who knows, it might even be you!

### Recent presentations have included:

- Bandsaw Setup and Bandsaw Blades
- Turning an Offset Padfoot Table Leg
- Marquetry
- Sharpening
- Dulcimer making
- Shaker Table Build Workshop
- Wheel making
- Windsor chair making
- Spoon Carving
- Fitting a Drawer
- Power Carving
- Bandsaw Boxes
- Hide Glue
- Tuning up a Wide Board
- Workbenches
- Intarsia Lidded Wood Boxes
- Turning a Peppermill
- Using SketchUp

If you know of someone with a woodworking skill that could be of interest please contact Dave Powles at: (704) 506-0403.



## Continue to Invite Potential New Members to Our Meetings

Dues are \$30.00 for new members and \$25.00 for renewals. Make checks payable to "Charlotte Woodworkers Assoc." or "CWA".

We welcome our returning and new members and encourage you to bring your woodworking friends to our meetings, so they can also join CWA.

Fred Miller collects dues during the monthly meetings or mail your dues to Fred at 1208 Salem Drive Charlotte NC 28209. The membership application is available on our website -

<http://www.charlottewoodworkers.org/>



## Boy Scout Woodworking Merit Badge

JPM has been holding shop sessions for 20 Boy Scouts to work towards receiving a woodworking merit badge.

Jim Emery will be looking for volunteers from CWA membership to assist with Saturday workshops, as another session will be offered in 2011. Workshop sessions are anticipated to be held as morning and afternoon sessions.

This is an outstanding way to introduce young people to woodworking. With many school shop programs being phased out this may be the only contact our youth have to a woodshop and the craft of woodworking.

If you would like to put your name on that list to help or would like to find out more please contact Fred Miller at: [fredmiller2@gmail.com](mailto:fredmiller2@gmail.com).

Watch for additional information to be published to the CWA Google group.



## Regular CWA Meeting Time and Place (Begins again in January 2011)

Meetings of the Charlotte Woodworkers Association are held the third Tuesday of each month, except for December. Meetings are held at Jackson Park Ministries Woodshop at Sentry Post Drive, Charlotte, NC.

Please check the web site

([www.charlottewoodworkers.org](http://www.charlottewoodworkers.org)) for directions.

Note: you may see construction on Sentry Post Drive as they have been working the area of late.

A social and refreshment time starts at 5:30pm; our meeting starts at 6:30pm. Come to the meeting early and get to know your fellow woodworking enthusiasts!



## *The CWA Library*

Books and DVDs are available from the CWA library for a buck a month. Contact Maurice Blackburn at [MBlackburn1@Carolina.RR.Com](mailto:MBlackburn1@Carolina.RR.Com)

Also, please help your fellow woodworker and make your club newsletter even better by contributing a short book review.

Remember, your review is redeemable for a free DVD rental from the CWA library!

Send your book review to Roger Callahan ([roger\\_callahan@bellsouth.net](mailto:roger_callahan@bellsouth.net))



## **The Classified Section**

### **NO ITEMS THIS MONTH**

-----  
This space is reserved for classified ads! If you have any woodworking or related items for sale that you think would be of interest to the membership please contact: Roger Callahan ([roger\\_callahan@bellsouth.net](mailto:roger_callahan@bellsouth.net)) Include a complete description of the items(s) and a picture or 2 (if possible).  
---

Also, check the bulletin board at JPM as other items may be posted there.



## **2010 CWA Officers**



Bruce Bogust  
President  
(704) 321-0979  
[bbogust@carolina.rr.com](mailto:bbogust@carolina.rr.com)



David Powles  
Vice President, in-charge of programming  
(704) 506-0403  
Sorry, no e-mail available



Fred Miller  
Treasurer  
(704) 650-8520  
[fredmiller2@gmail.com](mailto:fredmiller2@gmail.com)



Roger Callahan  
(704) 236-2385  
Secretary  
[roger\\_callahan@bellsouth.net](mailto:roger_callahan@bellsouth.net)



Maurice Blackburn  
Librarian  
(704) 394-8780  
[MBlackburn1@Carolina.RR.Com](mailto:MBlackburn1@Carolina.RR.Com)



Wayne Manahan  
Web Site  
(704) 786-0768  
[WManahan@VNet.Net](mailto:WManahan@VNet.Net)

# Directions to Jackson Park Ministries



From the intersection of I-85 and Billy Graham Parkway:

- 1.) Take Billy Graham Parkway South.
- 2.) Turn Right on Paul Brown Blvd / West Blvd. (this will be after the main entrance to the airport)
- 3.) Turn Right on Airport Drive.
- 4.) First left on Sentry Post Drive.
- 5.) At the end of Sentry Post Drive there is driveway on the left. Enter here. Using the photo above, drive down the driveway and around to the warehouse with the "x" on the top.

From the intersection of South Tryon Street and Billy Graham Parkway (where Woodlawn turns in to Billy Graham). Also exit 6 from I-77.):

- 1.) Take Billy Graham Parkway North.
- 2.) Turn Left on Paul Brown Blvd / West Blvd. (this will be at the light after the Tyvola Road exit)
- 3.) Follow from Step 3 above...

## CWA SPONSOR

*Please thank them every time you use their services.*

### **Woodcraft**

1725 Windsor Square Drive  
Matthews, NC 28105  
(704) 847-8300

[Charlotte Store](#)

### **WHOLESALE TOOLS**

4200 Barringer Drive  
Charlotte NC 28217  
1-800-438-3580 (Service)

[www.wttool.com](http://www.wttool.com)

5% - 20% discount with current membership card.

### **Klingspor's Woodworking Shop**

[www.woodworkingshop.com](http://www.woodworkingshop.com)

800-288-0000

### **Irwin Tools**

<http://www.irwin.com/>

### **FARRIS BELT & SAW**

235 Foster Ave.  
Charlotte, NC 28203

[www.farrisbelt.com](http://www.farrisbelt.com)

704-527-6166

complete sharpening services and abrasives

### **Direct Tools Factory Outlet**

8111 Concord Mills Boulevard  
Concord, NC 28027-6462  
(704) 979-9998

### **Horizon Forest Products**

Greenville, S.C.

<http://www.horizonforest.com/>

Local Charlotte Salesman Chad Mitchell, 704-401-6426

### **The Woodworking Source**

184 Azalea Road  
 Mooresville, NC

<http://www.thewoodworkingsource.com>

Phone: 704-662-9663



## CWA MENTOR PROGRAM

The following members have offered their help to anyone interested in learning skills or new techniques in their area of interest. Contact each person to arrange times to get together if interested.

Wayne Manahan

Sharpening

704.786.0768

[wmanahan@vnet.net](mailto:wmanahan@vnet.net)

If you are willing to mentor new woodworkers please let us know. Thank you!



*"I have a lightning hammer –never strikes the same place twice.*

*-John Leake*

Roger Callahan  
3334 Whistley Green Dr.  
Charlotte, NC 28269

BUILD RATE  
US POSTAGE  
PAID  
PERMIT NO.  
00000

ADDRESS CORRECTION REQUESTED

---

---

---

---